

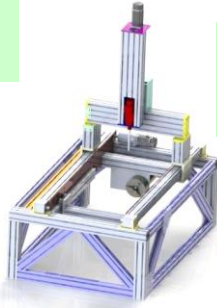


**PRODUCTS and SERVICES**

Greenhouse vehicles



Linear motion systems



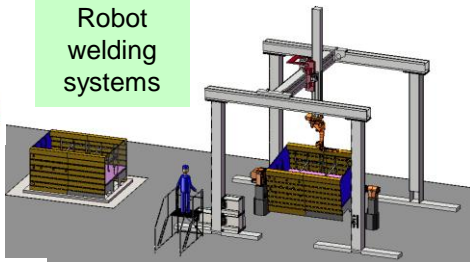
CAD/CAM systems for prosthetics and orthotics



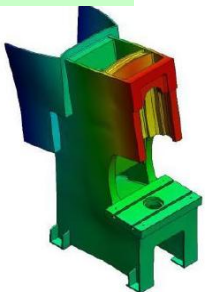
6 axis robot



Robot welding systems



Finite element analysis



Vibration Strain-gage Data acquisition CMM

Measurements



**AUTOMATIC GREENHOUSE SPRAYING ROBOT**



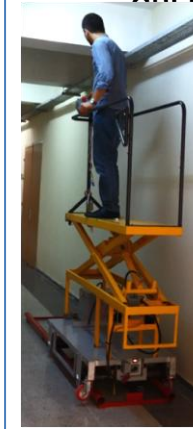
<b>Tank</b> 150 lt	<b>Boom</b> 2360 mm 14 nozzles	<b>Pump</b> 14 lpm 10 bar	<b>Speed</b> 0-1.5 m/s
-----------------------	--------------------------------------	---------------------------------	---------------------------

<b>Size</b> 850x1500 mm	<b>2batteries</b> 80 Ah	<b>Control</b> PLC
<b>Weight:</b> 200 kg (Tank empty)		

- Boom is made of stainless steel. Angles of metal nozzles can be adjusted.
- Sprays along 10.000 m when it is fully charged. Replacement of spare batteries is easy. One operator can use two vehicles. It is preferred for quality pesticide spraying and human health. The pump and the tank is on the vehicle. Easier to operate as compared with vehicles with hose reels. Energy is saved.
- Forward and backward speeds can be adjusted from touch-screen . It moves on the heating pipes automatically without any operator. It can easily be moved between greenhouse aisles manually.

**OPTIONS:** Standart/Stainless steel structure  
Plastic/Stainless steel tank  
Cultivation platform  
Protecting panels

**GREENHOUSE CULTIVATION VEHICLE**



<b>Platform Size (mm)</b> 400x1500	<b>Weight</b> 270 kg	<b>Maximum Load</b> 100 kg
---------------------------------------	-------------------------	-------------------------------

<b>Speed</b> 0-1 m/s	<b>Maximum Height</b> 2.2 m	<b>2 batteries</b> 80 Ah
-------------------------	--------------------------------	-----------------------------

- Replacement of spare batteries is easy.
- Vehicle speed can be controlled by a pot.
- OPTION: Spraying unit

**IRRIGATION/ FERTILIZING/ PESTISIDE SPRAYING VEHICLE FOR SEEDING GREENHOUSE**



<b>Boom Height</b> Adjustable	<b>Boom</b> 9 m 56 nozzles	<b>Size and Weight</b> 850x1500 mm 320 kg	<b>2 batteries</b> 80 Ah
----------------------------------	----------------------------------	---	-----------------------------

- Can be used for irrigation, fertilizing, and pesticide spraying in seeding greenhouses.
- Moves on pipes in aisles. It can easily be moved between greenhouse aisles manually.
- Vehicle speed can be changed by a pot.
- DC motor controlled hose winding.
- Changing spare batteries is easy.

OPTION: PLC control (Automatic spraying without operator)